

City of Orange

Introduction to Redistricting

August 25, 2021

Ryder Todd Smith, President, Tripepi Smith
Dr. Justin Levitt, Vice-President, National Demographics Corporation

Traducción al Español Disponible

Meeting is Being Recorded

Logistics and Amenities

Introductions

Today's Goals

You Learn From the Experts

Experts Listen to *You*

Mapping Tools Overview

You Leave Empowered to Give Effective Feedback

Didn't We Just Do This?

- ❑ Orange moved to districts in 2019
- ❑ Orange 2020 election used districts for first time
- ❑ Census data is only updated every ten years
- ❑ Critical requirement is population balance

Why You Should Care

- ❑ Democracy works better when people are engaged.
- ❑ You are experts on the community.
- ❑ You are an expert about your neighborhood.
- ❑ A once in a decade opportunity.

Today's Schedule

AGENDA: 6:00 p.m – 7:30 p.m

Process, Rules and Goals

Mapping Tools

Neighborhoods/Communities of Interest

Next Steps

Redistricting Process

Step	Description
Kickoff Workshop 8/25/2021	Held prior to release of draft maps. Education and to solicit input on the communities in the Districts.
Census Data Release August 12	Census Bureau released official 2020 Census population data in legacy format.
California Data Release Early October 2021	California Statewide Database releases California's official 'prisoner-adjusted' 2020 redistricting data, then a mandated three-week waiting period before maps are released.
Draft Map Hearings October 2021 December 14, 2021 February 8, 2022	Three Public Hearings to discuss and revise the draft maps and to discuss the election sequence.
Map Adoption By 4/17	Final map must be posted at least 7 days prior to adoption. Map adopted via ordinance or resolution.

Redistricting Rules and Goals

1. Federal Laws

Equal Population
Federal Voting Rights Act
No Racial Gerrymandering



2. California Criteria for Cities

1. **Geographically contiguous**
2. **Undivided neighborhoods and “communities of interest”**
(Socio-economic geographic areas that should be kept together)
3. **Easily identifiable boundaries**
4. **Compact**
(Do not bypass one group of people to get to a more distant group of people)

Prohibited: “Shall not favor or discriminate against a political party.”

3. Other Traditional Redistricting Principles

Minimize voters shifted to different election years

Respect voters’ choices / continuity in office

Future population growth

Preserving the core of existing districts

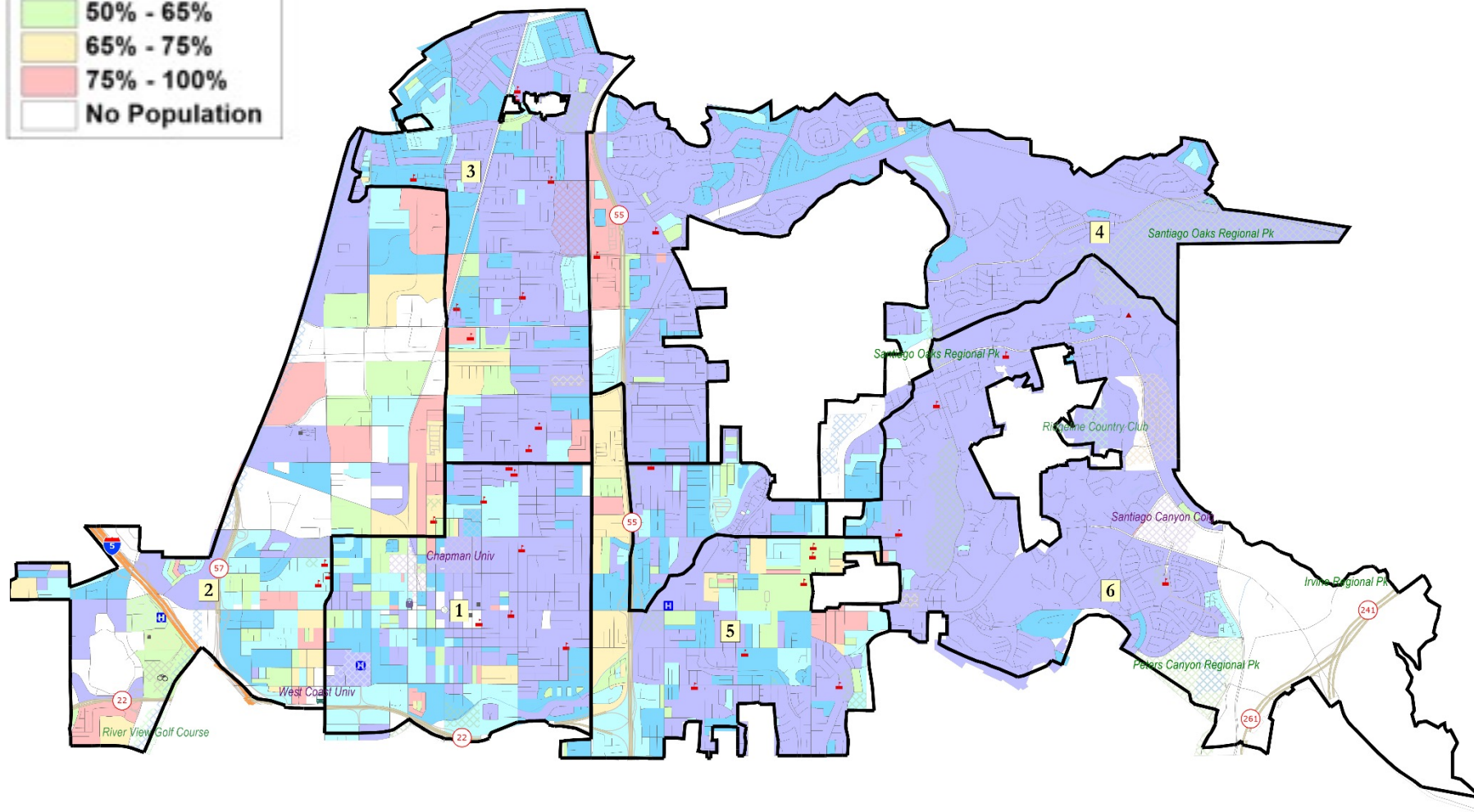
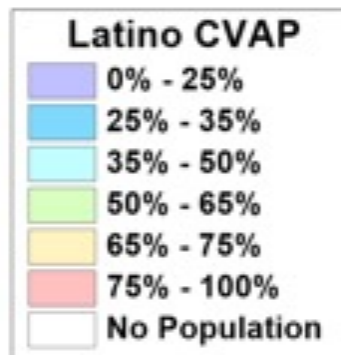
Demographic Summary of Existing Districts

District		1	2	3	4	5	6	Total
2020	2020 Est. Total Pop	25,659	24,104	23,048	22,268	22,781	22,051	139,911
	Deviation from ideal	2,341	786	-271	-1,051	-538	-1,268	3,608
	% Deviation	10.04%	3.37%	-1.16%	-4.51%	-2.31%	-5.44%	15.47%
2020 Total Pop	% Hisp	36%	57%	38%	29%	59%	27%	41%
	% NH White	47%	23%	42%	47%	28%	51%	40%
	% NH Black	2%	3%	2%	1%	2%	1%	2%
	% Asian-American	11%	15%	15%	21%	9%	18%	15%
Citizen Voting Age Pop	Total	19,122	16,928	13,652	12,549	12,014	15,417	89,683
	% Hisp	28%	40%	28%	22%	43%	20%	30%
	% NH White	62%	32%	66%	69%	53%	73%	59%
	% NH Black	1%	4%	2%	2%	1%	1%	2%
	% Asian/Pac.Isl.	9%	23%	3%	6%	0%	6%	9%

Estimates using official 2020 demographic data and NDC's estimated total population figures.

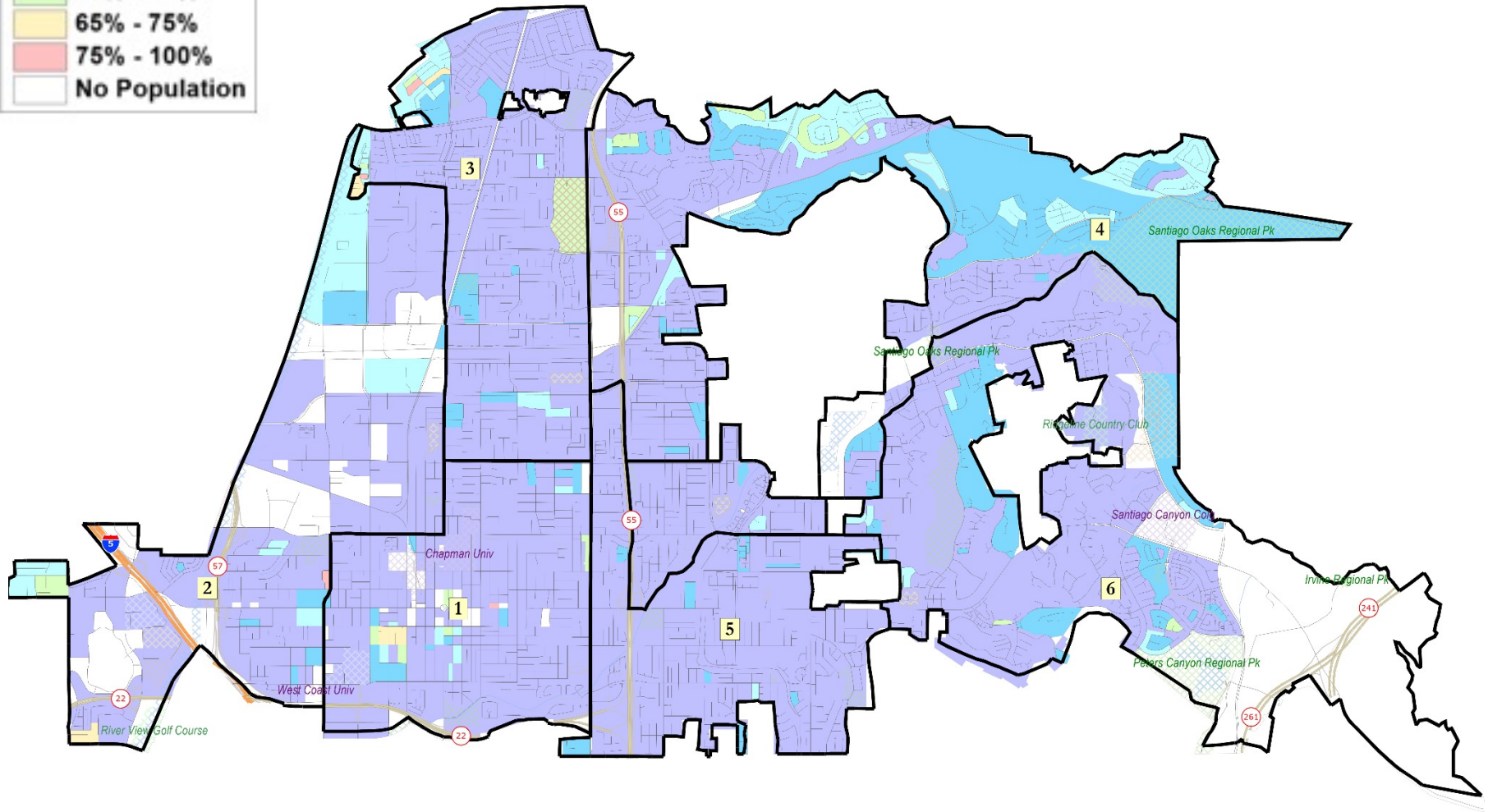
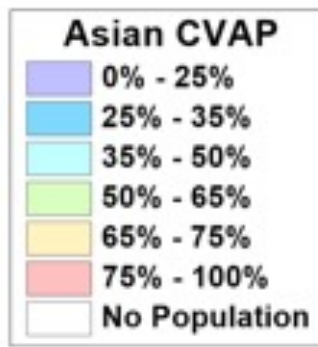
Each of the six districts must contain about 23,318 people.

Latino CVAP



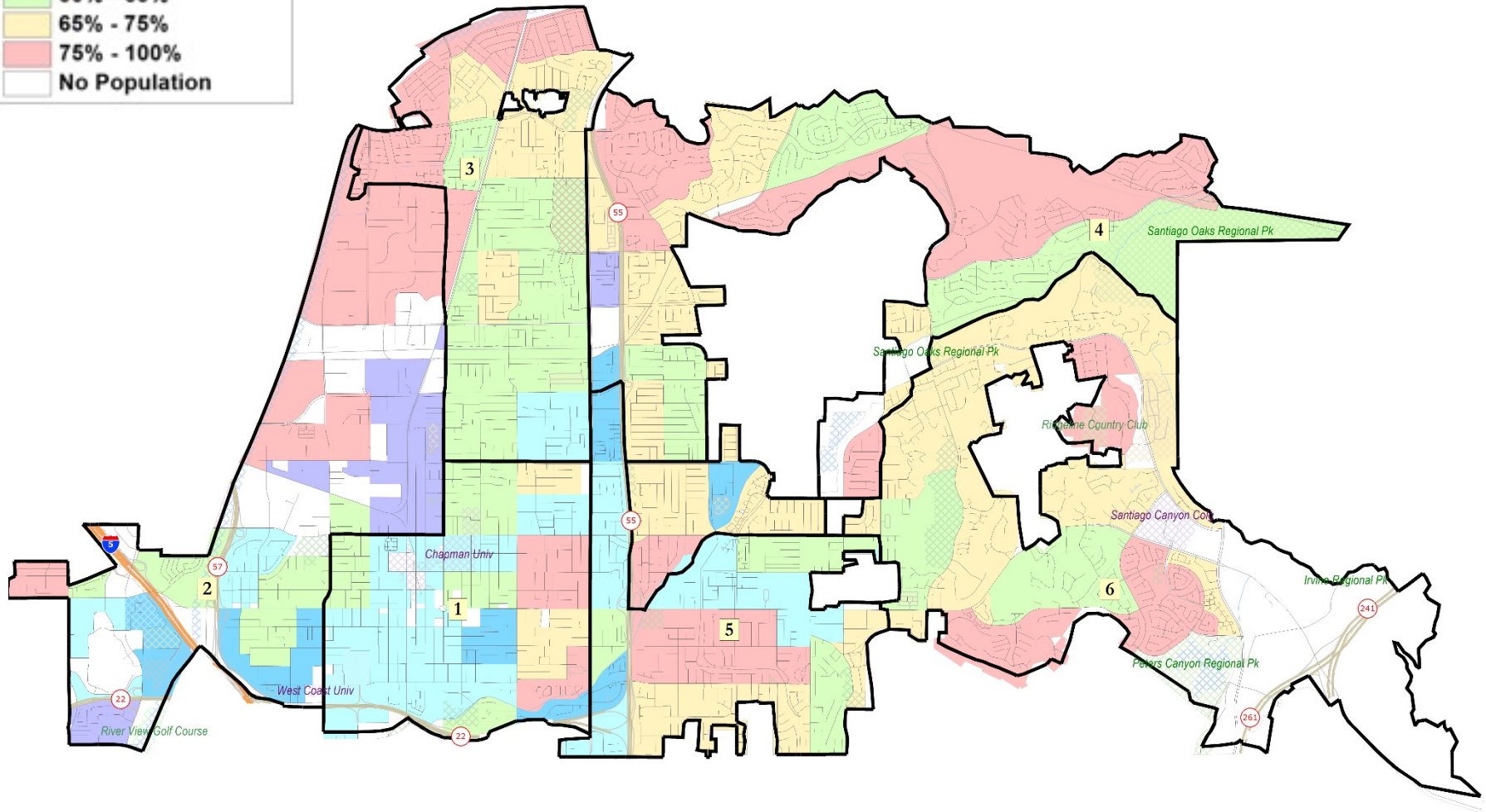
Latino neighborhoods are found in the western end of the city, in the El Modena area and along the 55

Asian-American CVAP



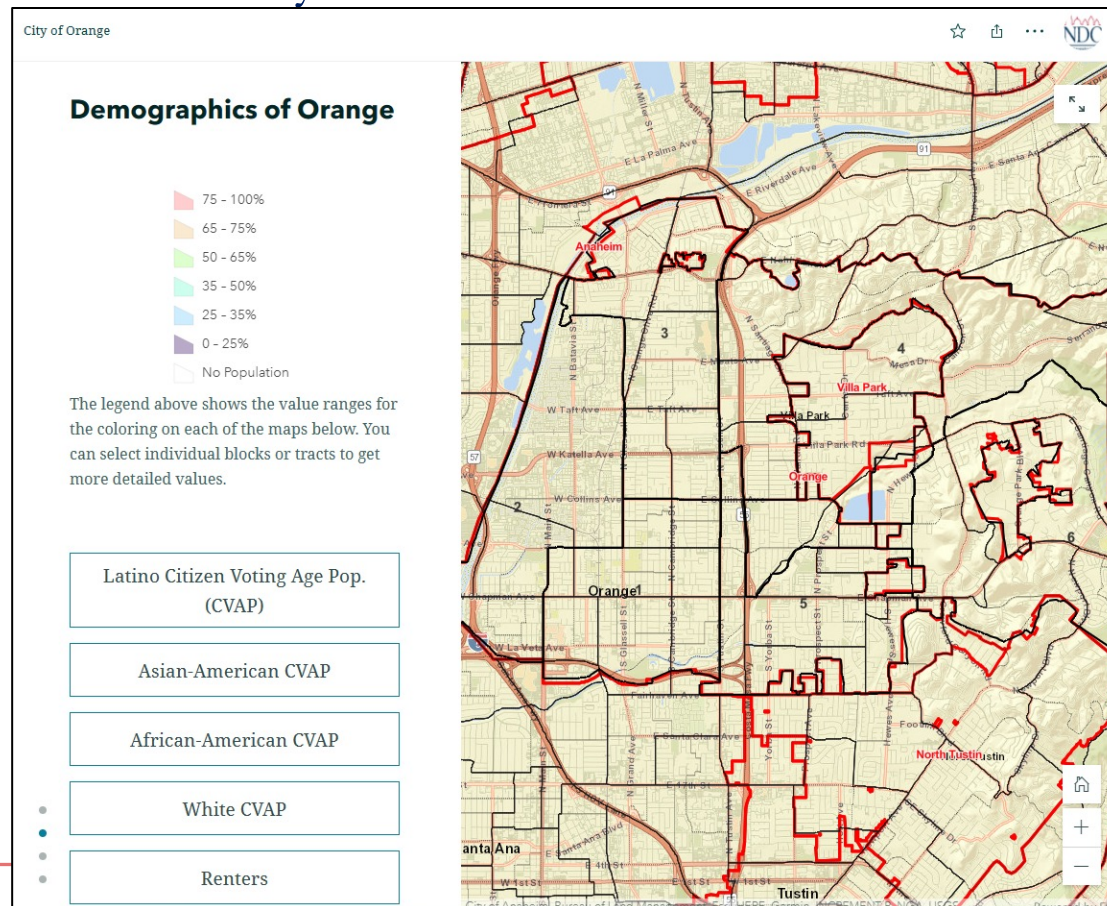
Asian-American neighborhoods are found in the north and western parts of Orange

Income over \$75K



Story Map

- Easy to use “story” of demographic and other data
 - ▣ Similar to PowerPoint, but interactive
 - ▣ Used to identify “communities of interest”



Defining Neighborhoods

1st Question: What is your neighborhood?

2nd Question: What are its geographic boundaries?

Examples of physical features defining a neighborhood boundary:

- Natural neighborhood dividing lines, such as highway or major roads, rivers, canals and/or hills
- Areas around parks or schools
- Other neighborhood landmarks

In the absence of public testimony, planning records and other similar documents may provide definition.



Beyond Neighborhoods: Defining Communities of Interest

1st Question: What defines your community?

- Geographic Area, plus
- Shared issue or characteristic
 - Shared social or economic interest
 - Impacted by city or county policies
- Tell us “your community’s story”

2nd Question: Would this community benefit from being “included within a single district for purposes of its effective and fair representation”?

- Or would it benefit more from having multiple representatives?

Definitions of Communities of Interest may not include relationships with political parties, incumbents, or political candidates.

Beyond Neighborhoods: Communities

Under the California Elections Code, “community of interest” has a very specific definition in the context of districting and redistricting cities and counties:

A “community of interest” is a population that shares common social or economic interests that should be included within a single district for purposes of its effective and fair representation.

Communities of interest do not include relationships with political parties, incumbents, or political candidates.

(emphasis added)

Public Mapping and Map Review Tools

- Different tools for different purposes
- Different tools for different levels of technical skill and interest
 - Simple “review draft maps” tool
 - Easy-to-use “Draw your neighborhood” tool
 - Paper- and Excel-based simple “Draw a draft map” tools
 - Powerful, data-rich “Draw a draft map” tool

Whether you use the powerful (but complicated) online mapping tool, Excel, the paper kit, or just draw on a napkin, we welcome your maps!

Simple Map Drawing Tool

Paper “Public Participation Kit”

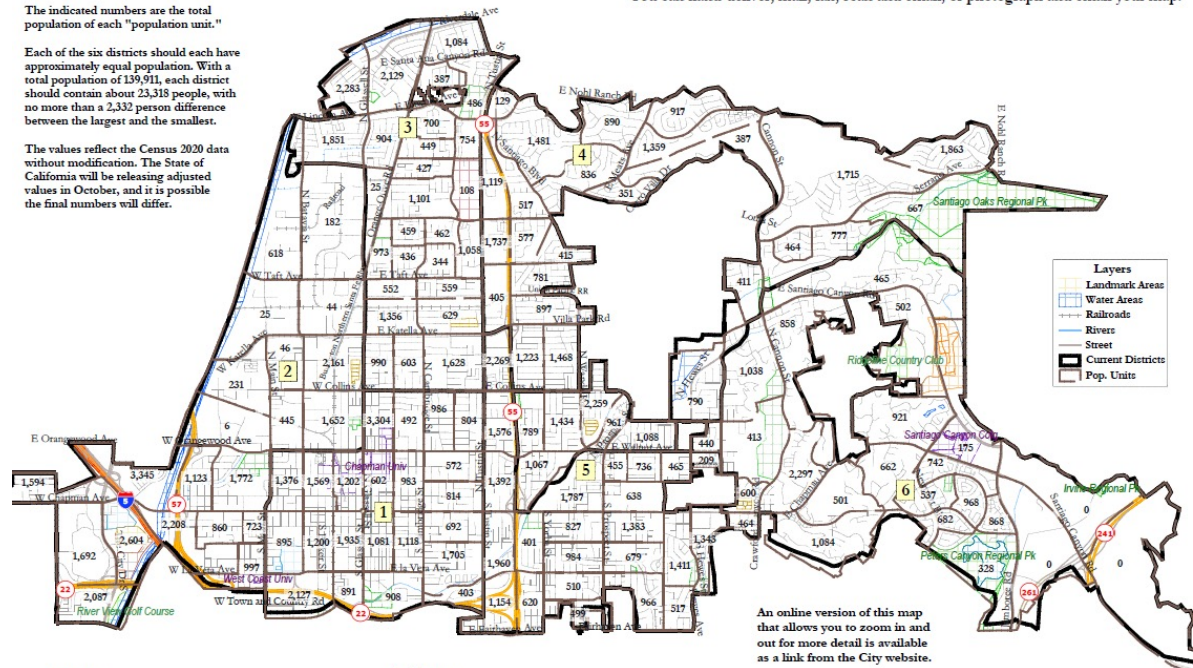
- For those without internet access or who prefer paper
- Total Population Counts only – with or without demographic numbers (available on Story Map)

City of Orange - Redistricting 2021 One Page Kit

The indicated numbers are the total population of each "population unit."

Each of the six districts should each have approximately equal population. With a total population of 139,911, each district should contain about 23,318 people, with no more than a 2,332 person difference between the largest and the smallest.

The values reflect the Census 2020 data without modification. The State of California will be releasing adjusted values in October, and it is possible the final numbers will differ.



Name: _____ Address: _____
Phone: _____ Email: _____

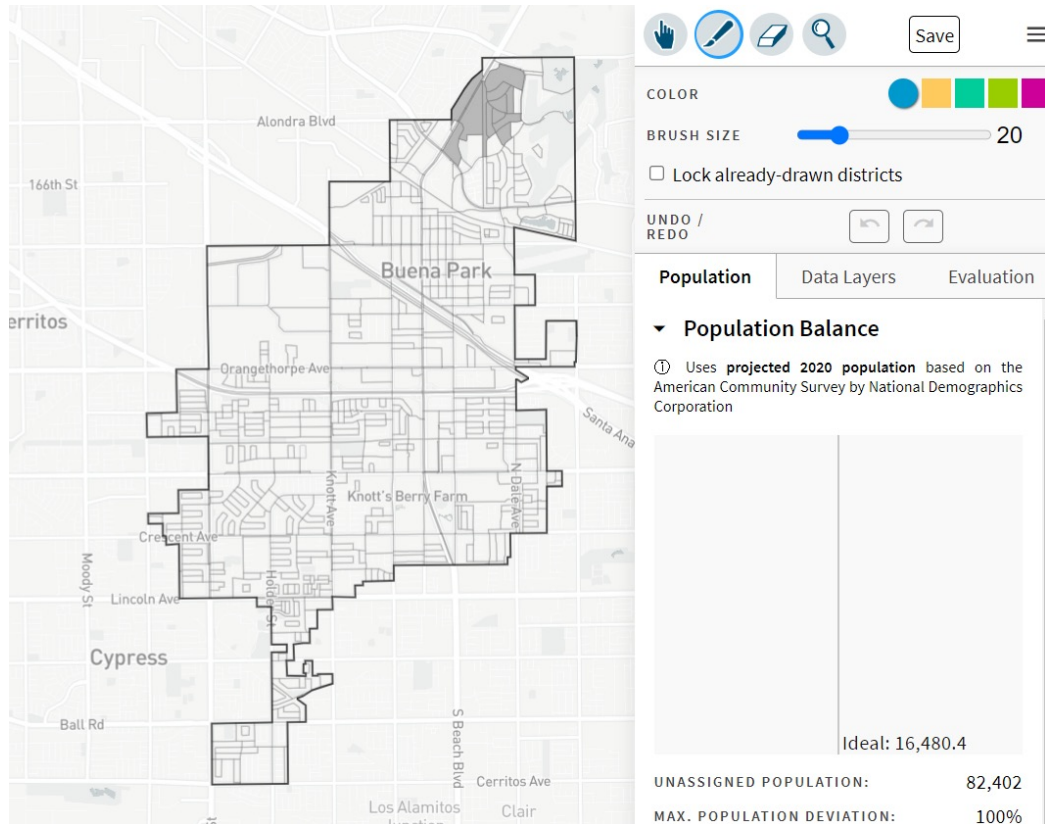
An online version of this map that allows you to zoom in and out for more detail is available as a link from the City website.

Population Units are also available in the full draw-your-own-map tool.

DistrictR

DistrictR to draw a “community of interest” or a full district map.

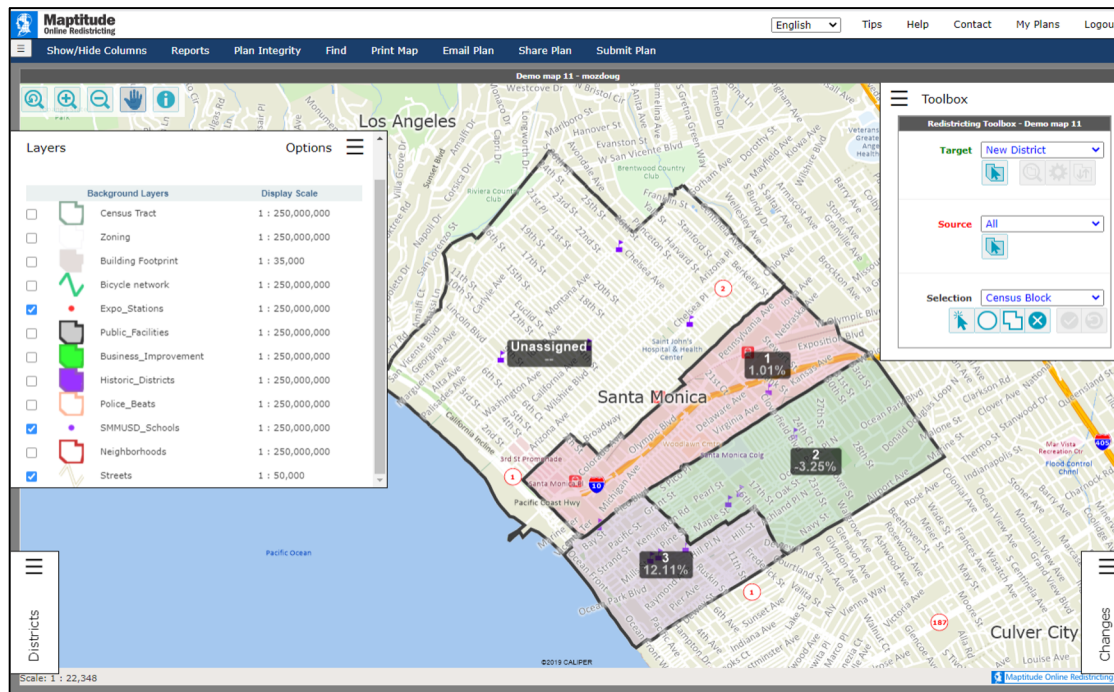
- Also includes simple district-mapping tool
- Similar external options: [Representable.org](https://representable.org), [DrawMyCACommunity.org](https://drawmycacommunity.org)



Caliper's “Maptitude Online Redistricting”

Full Database, Powerful Online Mapping Tool

- Powerful, common, data-rich online tool
- Six language options: English, Spanish, Portuguese, Vietnamese, Mandarin and Korean
- [Quick Start Guide](#)



Q&A With Your Hosts

Your Turn

What is your neighborhood and what are its boundaries?

What other notable areas are in the City, and what are their boundaries?

Discussion to identify areas that meet each AB 849 definition:

- “neighborhoods”
- “communities of interest . . . that should be included within a single district for purposes of its effective and fair representation.”

Your Turn – Communities of Interest

- ❑ Who is a part of your community?
- ❑ What are some meaningful places your community recognizes or gathers at?
- ❑ What are some common concerns you share with a group?
- ❑ What are some common cultural characteristics that unite a community?
- ❑ What are common work-related traits that bring a community together ?
- ❑ What is significant about the physical environment?
- ❑ What areas benefit from staying together in a district?

*Your thoughts and ideas will become part of
the record and be recorded / written down*

Next Steps

Step	Description
Census Data Release August 12	Census Bureau released official 2020 Census population data in legacy format.
California Data Release Early October 2021	California Statewide Database releases California's official 'prisoner-adjusted' 2020 redistricting data, then a mandated three-week waiting period before maps are released.
Draft Map Hearings October 2021 December 14, 2021 February 8, 2022	Three Public Hearings to discuss and revise the draft maps and to discuss the election sequence.
Map Adoption By 4/17	Final map must be posted at least 7 days prior to adoption. Map adopted via ordinance or resolution.

Share Your Thoughts / Continue Engagement



The screenshot shows the City of Orange website. At the top is the City of Orange logo with a green leaf and the text 'City of Orange'. To the right is a 'Select Language' dropdown and a search bar. Below the header is a navigation menu with links: Welcome, Schedule, Draft Maps, Draw A Map, FAQ, Resources, and Contact. The main content area is titled 'The Redistricting Process' in blue. It contains three paragraphs of text and a circular seal on the right. The seal features an orange and the text 'CITY OF ORANGE', 'INCORPORATED', 'APRIL 6, 1889', and 'ORANGE COUNTY CALIFORNIA'. Below the paragraphs is a section titled 'How to participate?' in blue, followed by a paragraph and a bulleted list of three items.

The Redistricting Process

The City of Orange is asking for your help to plan and draw new City districts.

Every 10 years, local governments use new data from the Census to redraw their district lines to reflect how local populations have changed. State law requires cities and counties to engage communities in the redistricting process by holding public hearings and doing public outreach, including to underrepresented and non-English-speaking communities.

The final map created through the redistricting process will define Orange's City Council district boundaries for the next 10 years. There are many ways to participate in redistricting and we invite you to get involved!

How to participate?

Share your specific thoughts, draw a map, or attend an upcoming workshop to get involved!

- Submit written testimony about the process or a specific map to cminfo@cityoforange.org.
- [Click here](#) to see the calendar of workshops and public hearings at which you can speak about the process or a specific map.
- [Click here](#) for information on drawing and submitting maps.

Come to the Next Hearing: TBA

Website: [Draw Orange \(orangedistricts.org\)](http://orangedistricts.org)

Email: cminfo@cityoforange.org